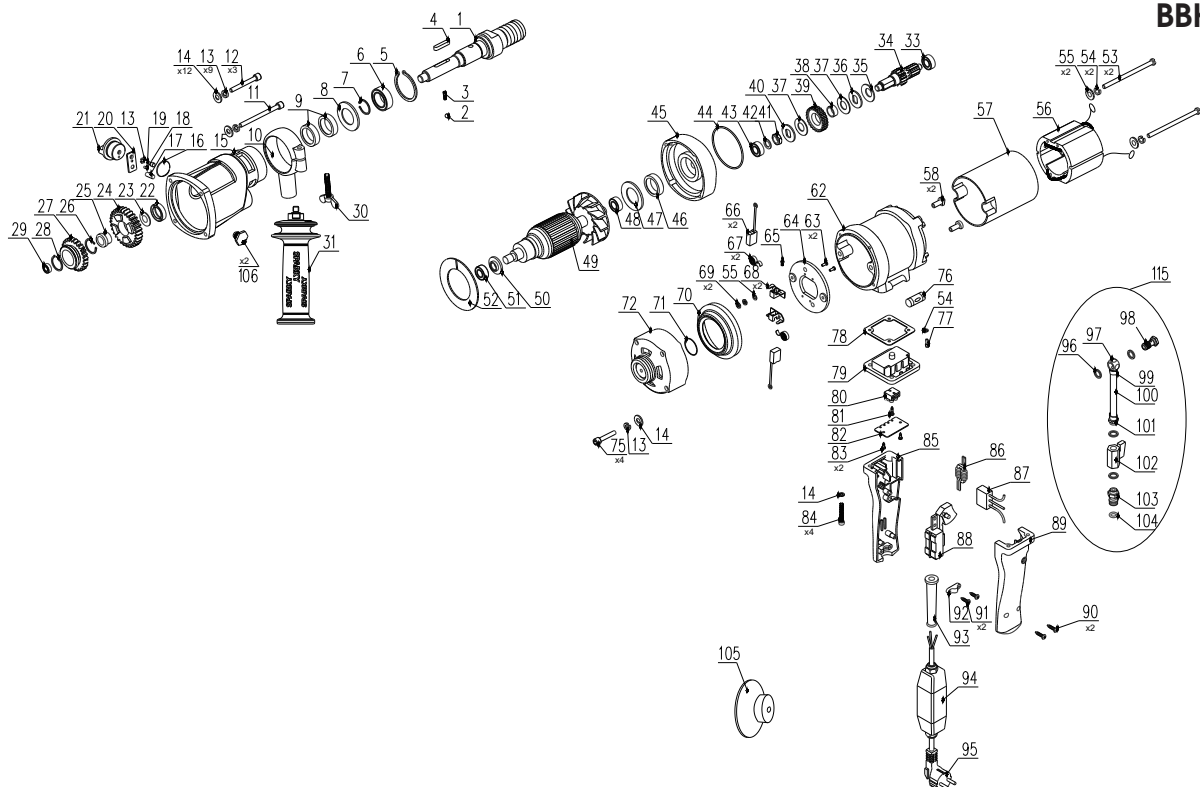


POS. No.	Ref.No.	Description
1	187308	OUTPUT SHAFT
2	187309	STEEL BALL $\Phi 4$
3	187310	SMALL SPRING $\Phi 3.6 \times 14.5 \times 12$
4	187311	FLAT KEY A5x32
5	187312	SPRING SHIELD RING FOR HOLES $47 \Phi 47 \times 1.5$
6	187313	DEEP GROOVE OF BALL BEARING/KS-NSK60052Z
7	187314	SPRING SHIELD RING FOR SHAFT $\Phi 25 \times 1.2$
8	187315	SHIM COVER 02-80/0-41
9	187316	BRACKET RUBBER SEALING RING/ FB25x40x7
10	187446	ASSISTANT HANDLE COVER 02-80/0-44
11	187318	INNER HEXAGONAL ROUND HEAD BOLT M5x75
12	187319	INNER HEXAGONAL ROUND HEAD BOLT M5x55
13	187320	SPRING WASHER $\Phi 5$
14	187321	FLAT WASHER $\Phi 5$
15	187322	GEAR SHELL/ 02-80/0-02
16	187323	O-SHAPE SEALING RING $\Phi 20 \times 3$
17	187324	BEARING STEEL COLUMN/ $\Phi 5 \times 16$
18	187325	CYLINDRICAL PIN $\Phi 3 \times 12$
19	187326	INNER HEXAGONAL ROUND HEAD BOLT M5x12
20	187327	ADJUSTABLE SPEED BLOCK 02-80/0-12
21	187328	ADJUSTABLE SPEED KNOB/ 02-80/0-13
22	187329	BRACKET RUBBER SEALING RING/ FB22x35x7
23	187330	OIL SEALING BASE SHIM 2($\Phi 24 \times \Phi 18 \times 0.8$) 02-80/0-58
24	187331	6 GEAR/ 02-80/0-06
25	187332	COOPER COVER/ 18X20X(22X2)X12/ 02-80/0-06-1
26	187333	SHIELD FING FOR SHAFT $\Phi 18 \times 1$
27	187334	4 Φ GEAR 02-80/0-05
28	187335	UNMARK UNCORK SHIELD FING FOR SHAFT $\Phi 17$
29	187336	QUILL BEARING 12X16X10/ HK1210
30	187449	BUTTERFLY SHAPE BOLT M6x35
31	146374	Handle AVR M14/L12
33	187340	DEEP GROOVE BALL BEARING 9X26X8/ KS-NSK629
34	187341	3 GEAR SHAFT/ 02-80/0-04
35	187342	BUTTERFLY SPRING $\Phi 28 \times \Phi 16.1 \times 1.8$ / 02-80/0-72
36	187343	PREFORMING 28X(16 X14.2)X2.7 02-80/0-49G
37	187344	FRICTION PLATE/ 02-80/0-08
38	187345	COPPER COVER 17X14X7.3/ 02-80/0-07
39	187346	2 GEAR/ 02-80/0-03
40	187347	PRESS RING 28X14X12X2/ 02-80/0-10
41	187348	HEXAGONAL NUT M12x1.25
42	187349	SHIM 16X10X1/ 02-80/0-40
43	187350	QUILL BEARING 10X14X10/ HK1010
44	187351	SEALING O-RING $\Phi 78 \times 2$ 02-80/0-46
45	187352	MIDDLE COVER/ 02-80/0-14
46	187353	BRACKET RUBBER SEALING RING FB12x24x4.5
47	187354	OIL SEALING SHIM (32X18X0.8) 02-80/0-53
48	187355	DEEP GROOVE BALL BEARING $\Phi 32 \times \Phi 18 \times 0.8$ NSK6201
49	187356	ARMATURE ASSEMBLY/ 02-80/1-01
50	187357	ARMATURE REAR INSULATING COVER 02-80/0-52
51	187358	DEEP GROOVE BALL BEARING 10X30X9/ NSK6200
52	187359	SHIELD BOARD/ 02-80/0-35

POS. No.	Ref.No.	Description
53	187360	PAN HEAD SCREWS WITH CROSS RECESS M4X105
54	187361	SPRING WASHER $\Phi 4$
55	187362	FLAT WASHER $\Phi 4$
56	187363	STATOR ASSEMBLY/ 02-80/2-01
57	187364	STATOR INSULATING COVER 02-80/0-22
58	187365	INSULATION SHIM 02-80/0-23
62	187368	SHELL OF DRILL/ 02-80/0-15
63	187369	MUSHROOM HEAD RIVETS 3x6
64	187370	BRUSH HOLDER BASE PLATE 02-80/0-25
65	187371	PAN HEAD SCREWS WITH CROSS RECESS M3X6
66	187372	BRUSH ASSEMBLY 02-80/0-47
67	187373	COIL SPRING/ 02-80/0-28
68	187374	BRUSH FRAME ASSEMBLY 02-80/0-56
69	187375	HEXAGONAL NUT M4
70	187376	REAR COVER JACKET/ 02-80/0-24
71	187377	O-SHAPE SEALING RING/ $\Phi 30 \times 2.5 \times 35$
72	187378	REAR COVER / 02-80/0-16
75	187381	INNER HEXAGONAL ROUND HEAD BOLT M5x40
76	187382	LEVEL POLE/ 02-80/0-51
77	187383	CROSSED SLOT TAPPING BOLT M4x6
78	187384	HANDLE GASKET/ 02-80/0-39
79	187385	HANDLE BRACKET/ 02-80/0-21R
80	187386	POST HEADDG8H-0
81	187387	CROSSED SLOT TAPPING BOLT ST2.9x9.5
82	187388	HANDLE BRACKET COVER BOARD/ 02-80/0-68
83	187389	CROSSED SLOT TAPPING BOLT ST2.9x16
84	187390	INNER HEXAGONAL ROUND HEAD BOLT M5x35
85	187391	LEFT HANDLE/ 06-80/0-20
86	187392	INDUCTANCE/ 02-80/0-67
87	187393	CAPACITANCE 0.33UF+3300PF
88	187394	SWITCH FA1-10/2B-A1
89	187395	RIGHT HANDLE/ 06-80/0-19
90	187396	CROSSED SOLT TAPPING BOLT ST4.2x19
91	187397	CROSSED SOLT TAPPING BOLT ST4.2x16
92	187398	PRESSURE LINE BOARD 02-80/0-29
93	187399	JACKET/ 02-80/0-31
94	187400	PRCD
95	187401	CABLE&PLUG
96	187402	SPACER FOR WATER SWITCH 18X13.3X1.5/ 02-80/0-60
97	187403	CONNECTOR OF WATER FAUCET 02-80/0-62
98	187404	TIGHTENING SCREW (G3/8" PLUG) 02-80/0-61
99	187405	TIGHT RING 02-80/0-65
100	187406	INNER $\Phi 8 \times 350$ MESH TUBE
101	187407	OUTPUT CONNECTOR OF WATER FAUCET/ 02-80/0-63
102	187408	1/4" MINI BALL VALVE 02-80/0-43
103	187409	CONNECTOR OF WATER SWITCH/ 02-80/0-64
104	187410	O-SHAPE SEALING RING 11.2x2.65x16.5
105	187414	REAR COVER 06-80/0-12
106	187434	PLASTIC PLUG/ 02-80/0-16
115	187447	WATER SUPPLY SYSTEMS SET



BBK2 1500